

Windows version

Recommended computer system

PC with Intel Core 2 Duo or faster processor

Supported operating systems

Windows 7 (32/64-bit)
Windows 8 (32/64-bit)
Windows 8.1 (32/64-bit)
as of November, 2014

Microsoft and Windows are either registered trademarks or trademarks of Microsoft Corporation in the United States and/or other countries.

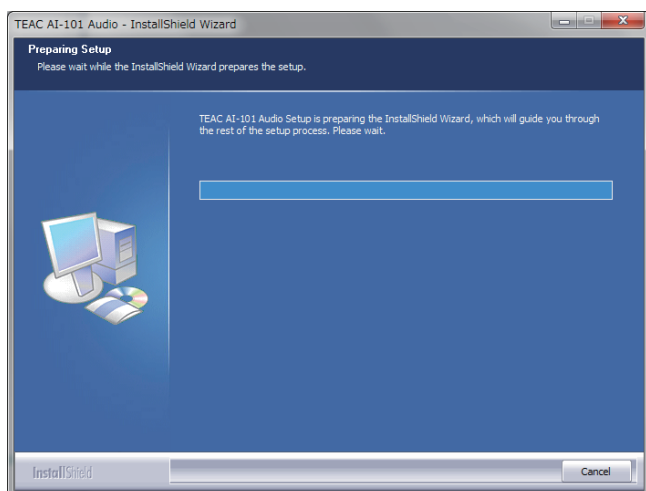
Other company names and product names in this document are the trademarks or registered trademarks of their respective owners.

- The following example explains the settings to make using Windows 7.

Driver installation procedures

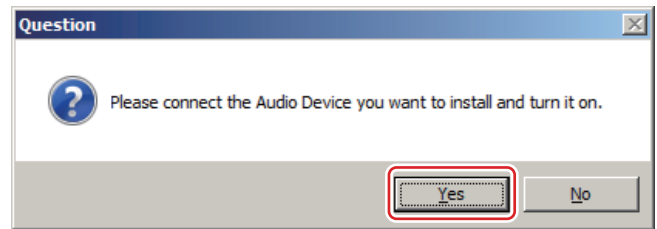
- 1 Uncompress the downloaded file.**
- 2 Connect the AI-101DA to the computer using a USB cable.**
- 3 Turn the AI-101DA on.**
- 4 Double-click "TEAC AI-101 Audio Driver 1.0.11.exe" to launch the installer.**

The "1.0.11" in the file name shows the driver version.

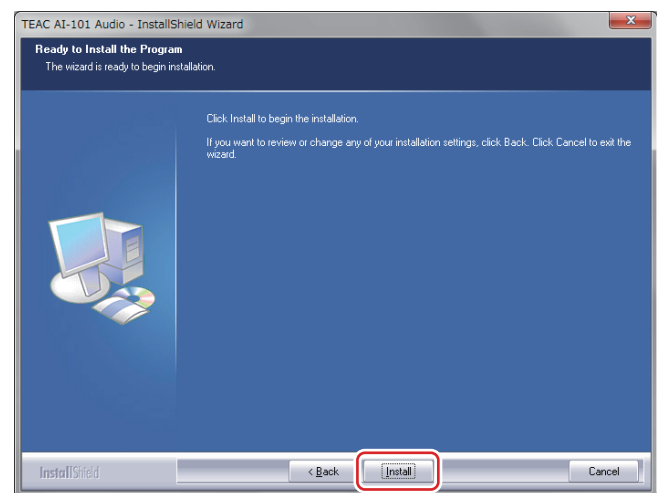


If the AI-101DA is not on or there is a problem with the USB cable connection, the following message will appear.

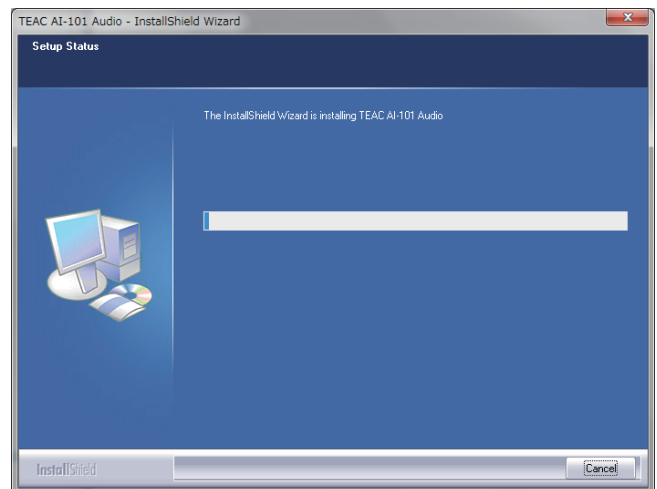
After confirming that the AI-101DA is on and checking the connection with the computer, click "Yes".



5 Click "Install".

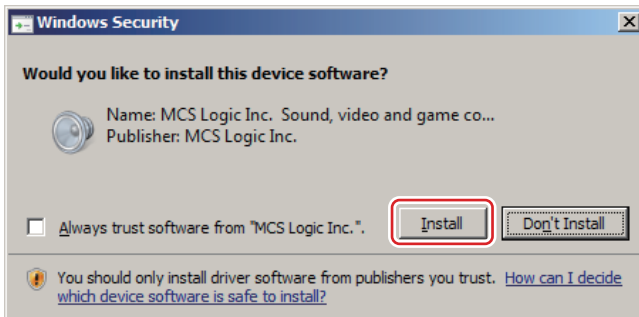


Do not use the computer during installation.

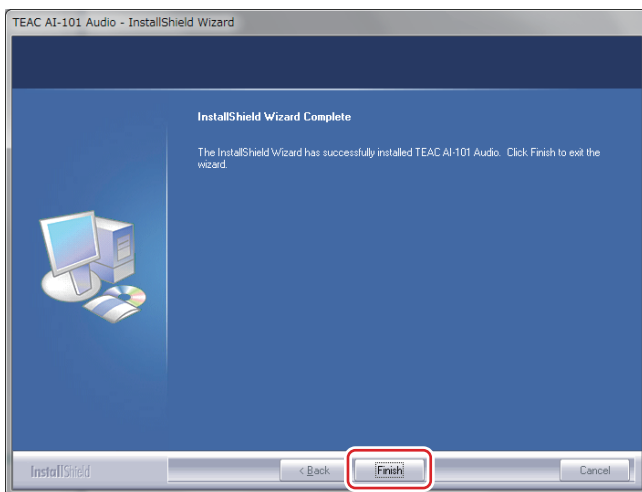


- 6** If the following pop-up message appears during installation, click “Install”.

Message example

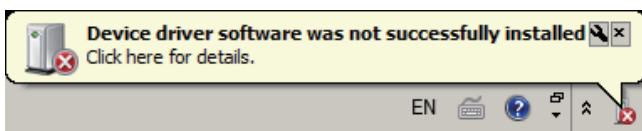


- 7** When the completion screen appears, click “Finish” to finish the installation.



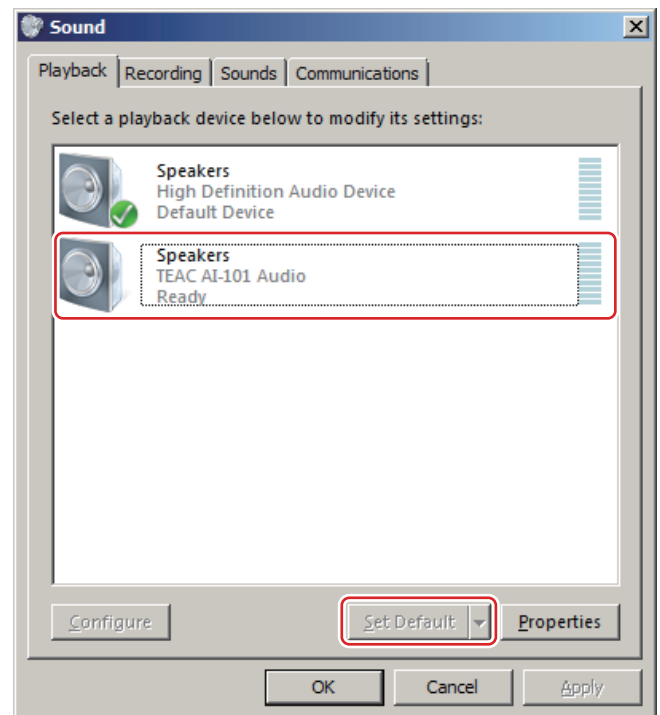
ATTENTION

A message like the one shown below might appear during installation. There is no need to click it, and it will disappear once the driver is installed.

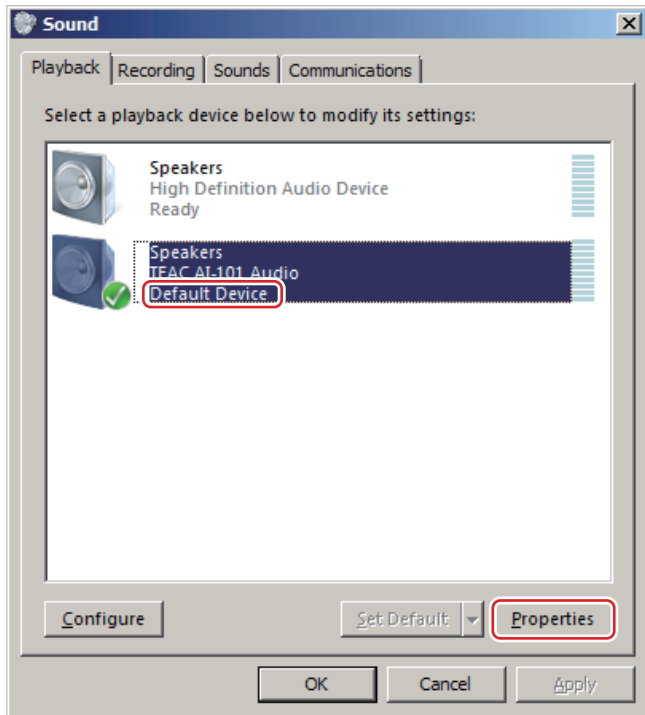


Windows settings

- 1** From the Start menu, select Control Panel.
- 2** Click “Hardware and Sound”.
- 3** Click “Manage audio devices”.
- 4** The Playback tab will be shown. Confirm that “TEAC AI-101 Audio” appears as “Speakers”.
- 5** Click “TEAC AI-101 Audio” to select it, and then click “Set Default” at the bottom of the window.

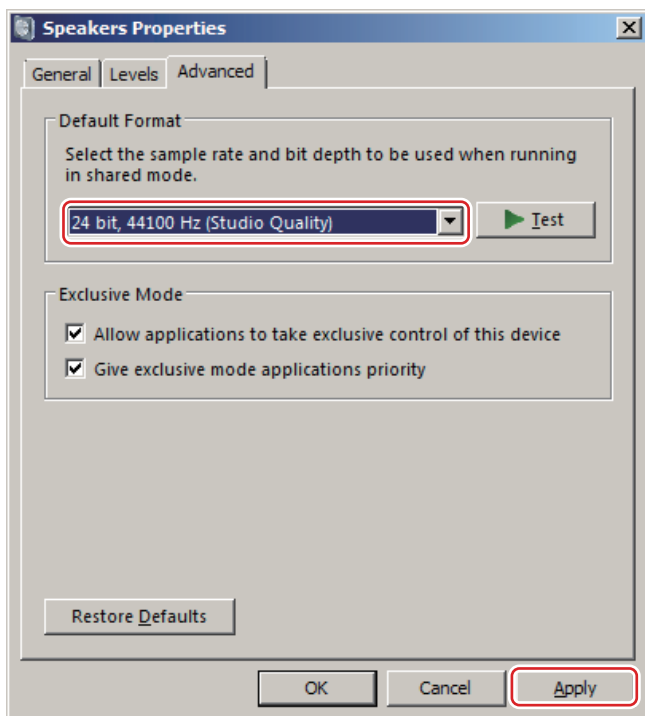


- 6** Confirm that the unit is set as the “Default Device”, and then click “Properties” at the bottom right.



- 7** When the Speakers Properties window opens, click the Advanced tab.

- 8** From the “Default Format” pull-down menu, select “24 bit, 44100 Hz (Studio Quality)” and click “Apply”.



ATTENTION

These settings will be used by all applications running in shared mode.

Music playback software settings

To output audio from music playback software from this unit when connected to a computer by USB, set the sound playback device to “Speakers TEAC AI-101 Audio” in the settings of the software that you are using.

See the instructions for that software for details about how to set the sound playback device.

If the software does not have a sound output device setting, usually sound will be output from the device selected as the Default Device set for Windows sound playback as described above.

- If you only want the sound from specific software to be output from this unit, select “Speakers TEAC AI-101 Audio” in the settings of that software, but do not set “Speakers TEAC AI-101 Audio” as the Default Device for sound playback in the Windows Sound Control Panel.